

PEOPLE GROUP ADOPTION



A Global Mission
Ecosystem



THE MOST URGENT FRONTIER

<1 in 1000

Frontier people groups
(where Christians are
fewer than **1 in 1,000**
people)

71%

make up **71%** of all
unreached peoples
worldwide.

1.9 billion

These groups include
1.9 billion people,
roughly one in four
people on earth.





We are asking churches to focus on the **38 largest groups**, which represent half the population of all frontier peoples.

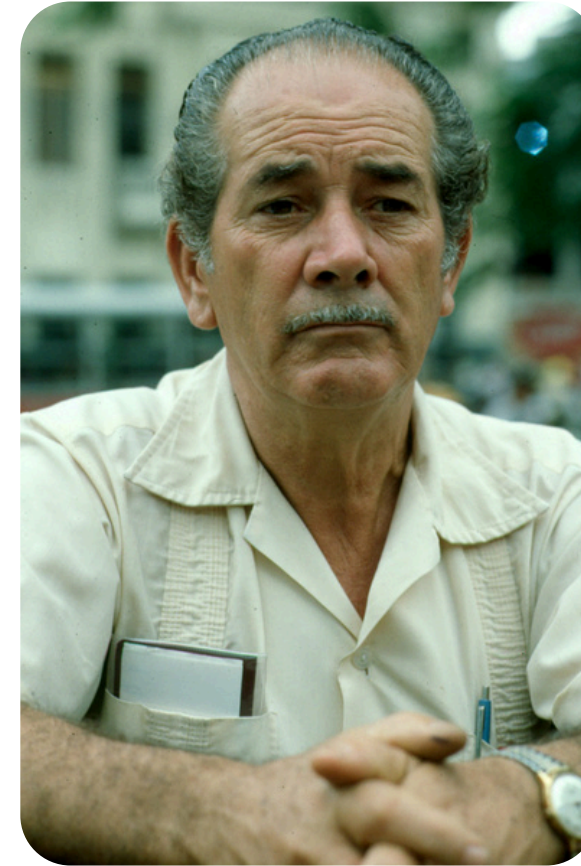
These are (some) of the most unreached of the unreached. - There are many that have been exposed to the term Unengaged Unreached which would not even reach the 1 in 1000 threshold as they are understood to have 0%.



WHAT IS PEOPLE GROUP ADOPTION?

Joshua Project's People Group Adoption connects individuals, small groups, churches, organizations, and networks with mission organizations and networks directly engaging frontier peoples. Through adoption, you commit to sustained prayer, learning, and partnership that accelerates gospel breakthroughs.

You don't work alone. Joshua Project is building a global ecosystem of 100,000 interconnected adopting partners who share vision, expertise, resources, and opportunities to bless frontier peoples together.



Here's an example of this impact

Awaken

An alliance of church leaders was AWAKENED to a frontier people group of over 30 million living in a closed country where conversion is treason.

Decide

The leaders DECIDED to adopt the people and

Orient

ORIENTED themselves by learning their worldview,

Pray

then began to PRAY for almost 10 years until some of the people started seeing visions of Christ with supernatural hunger for the truth.

Team up/ Take action

The church TEAMED UP with Christian professionals and businessmen who helped in TAKING ACTION to evangelize the people.

Within five years the first secret baptisms happened in a river at midnight, indigenous disciples multiplied leading to underground church planting movements.



THE ADOPTION PROCESS



A

Awaken

Frontier people groups are hidden from the global church because of cultural, religious, social, linguistic and geographical barriers. Awake to their existence, know their story and share about them. Awareness births responsibility.

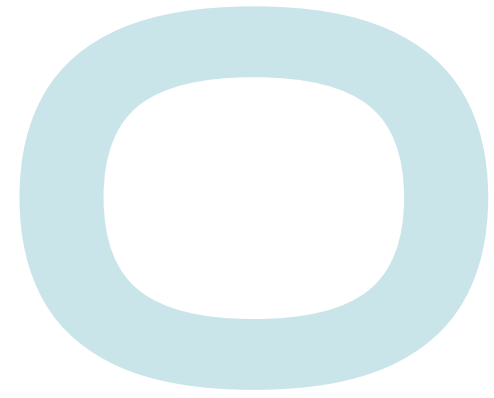


D

Decide

Missions become real when you move from general concern to choosing a specific frontier people. Use our manual and digital tools to help your small group, church, organization, or network decide on one or multiple frontier people groups to adopt.





Orient

Orientation is understanding the world of your adopted people. It involves learning their history, identity, language, religion, locations, felt needs, and gospel barriers for effective engagement.



P

Pray

Prayer is the engine of adoption. It builds consistent rhythms of intercession. Pray for open doors, increase in gospel workers, protection and boldness for indigenous believers, next steps in your involvement, and gospel breakthroughs.



T

Team Up

Adoption is strengthened through shared ownership. The farther you are from the culture and location of the people, the more you will need to partner with mission organizations and networks that will facilitate engagement.



T

Take Action

Taking action may include you financially supporting another organization pioneering work among frontier peoples. It could mean you are directly sending workers or regularly engaging through digital channels. Whatever the level of your involvement, taking action should result in catalyzing evangelism, disciple multiplication and church planting movements.



**WHEN YOU
ADOPT
YOU'LL
RECEIVE:**



Interest based
Partnerships



Prayer
Guides



Progress
Tracking and
Milestones



Leadership and
Mobilization
Toolkits



YOUR NEXT STEP

Adopt a frontier people group today:

joshuaproject.net/adopt

Share this opportunity with your small group, friends, and church leadership. Let us join hands to gather the harvest of the nations.

Scan to Begin

